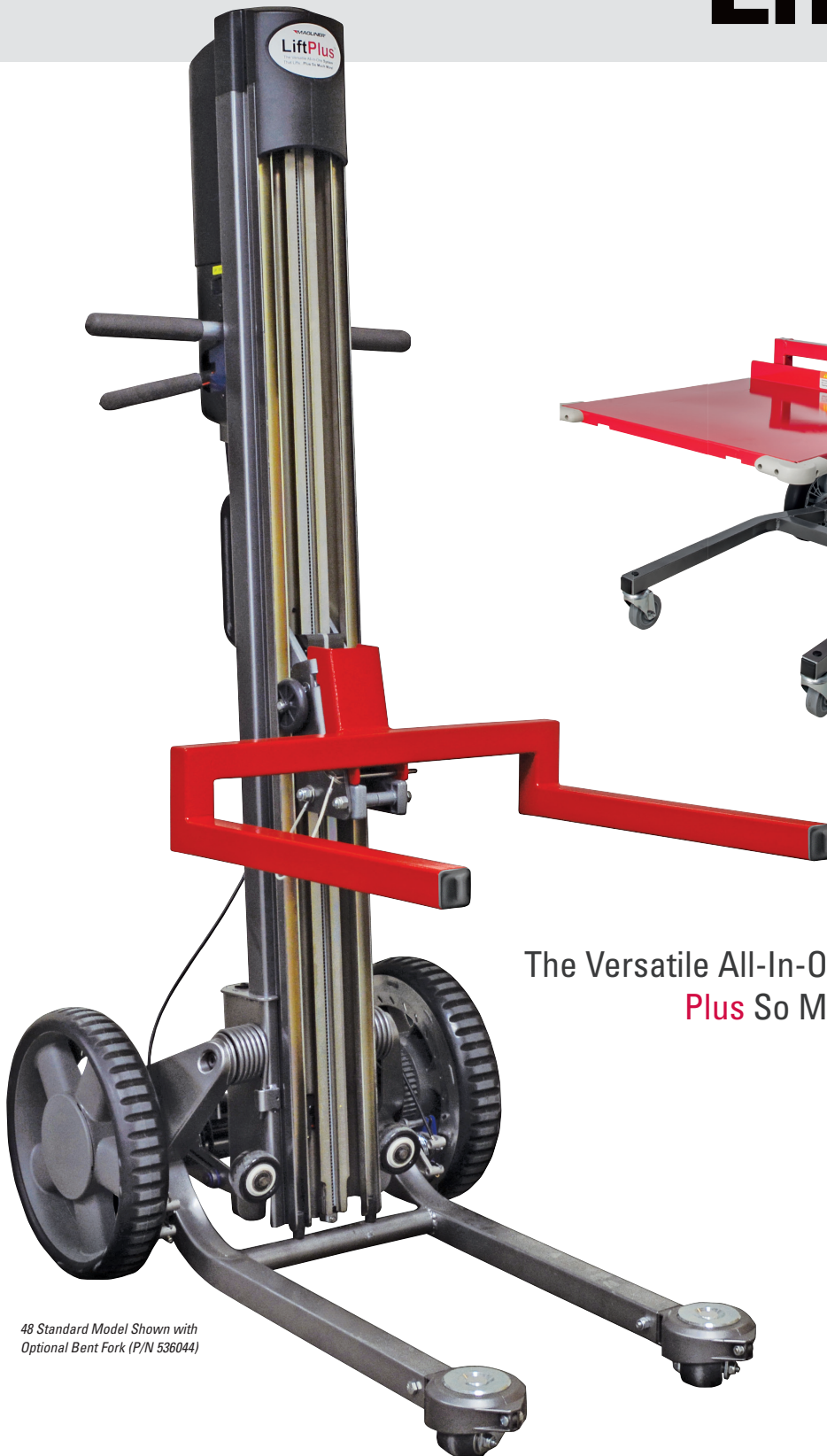


LiftPlus®



*48 Standard Model Shown with
Optional Bent Fork (P/N 536044)*



*33 Lite Model Shown with Optional
One-Piece Platform (P/N 536130)*

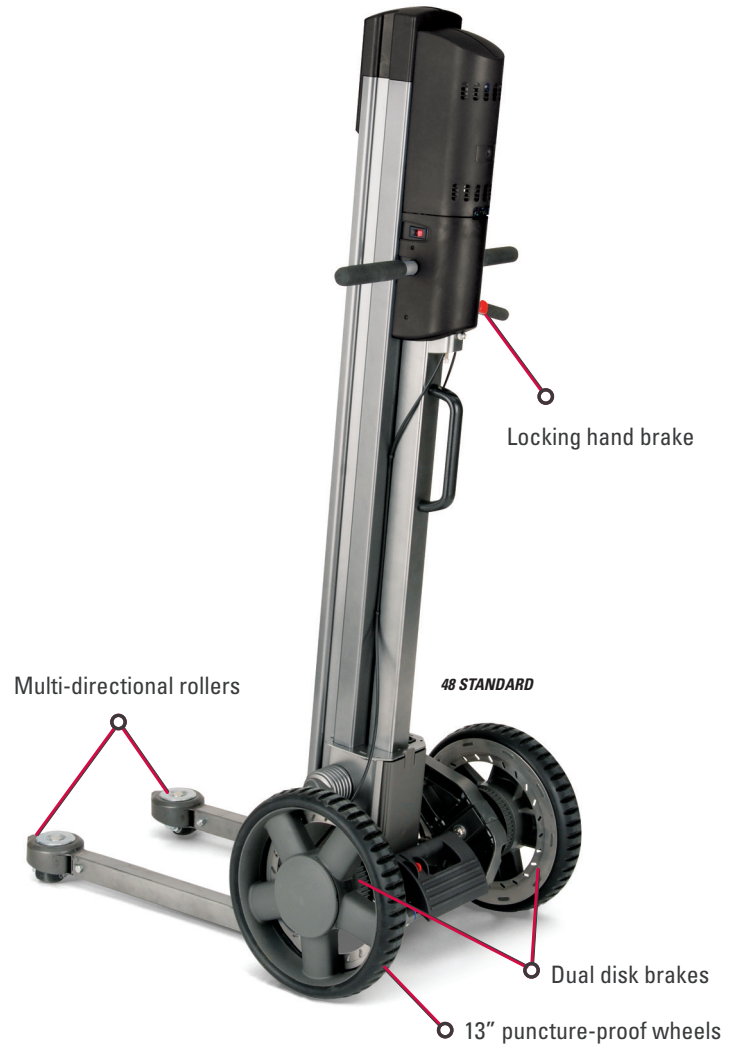
The Versatile All-In-One System That Lifts...
Plus So Much More!

INCREASE PRODUCTIVITY AND REDUCE JOB-RELATED INJURIES WITH THIS ALL-IN-ONE STACKER, TRANSPORTER, AND POSITIONER.

- Minimizes bending and stretching
- Narrow footprint fits through most doorways and tight spaces; no fork truck required
- Provides variable height work surface
- Supports diverse loading requirements
- Electric screw drive lift system provides smooth, quiet operation
- Quick change adapter allows easy changes between attachments
- Up to 350 lb. lifting capacity (120 lb. on high-speed models)
- Lifts 2"/second (4"/second on high-speed models)
- Easy to operate; no certification required; see instructional video on magliner.com

SPECIFICATIONS

	48 STANDARD	60 STANDARD	72 STANDARD
Attachment height (fully lifted)	48"	60"	72"
Attachment height (fully lowered)	3.5"	3.5"	3.5"
Overall height	60"	72"	84"
Overall depth	37"	37"	37"
Weight (base unit)	101 lbs.	108 lbs.	114 lbs.
High speed option	Yes	Yes	No
Battery capacity (median load)	125-150 lift cycles when fully charged		
Overall width (14" chassis)	25"	25"	N/A
Overall width (25" chassis)	33"	33"	33"
Chassis width	14" or 25"	14" or 25"	25"



TAKE ADVANTAGE OF THE BENEFITS OFFERED BY THE LIFTPLUS STANDARD, NOTING THE FOLLOWING EXCEPTIONS:

- Two-piece design allows for mobile applications
- Up to 150 lb. lifting capacity
- Lifts 2"/second

SPECIFICATIONS

33 LITE

Attachment height (fully lifted)	33"
Attachment height (fully lowered)	6"
Overall height	49"
Overall depth	42"
Weight (base unit)	71 lbs.
Weight (column only)	44 lbs.
Weight (chassis only)	27 lbs.
High speed option	No
Battery capacity (median load)	125-150 lift cycles when fully charged
Overall width	23.5"
Chassis width	22"



Attachments

ONE SYSTEM. MANY TOOLS.

Quickly handle a variety of tasks with the LiftPlus.

WORK BENCH



P/N	W"	L"	WT.(LBS.)
536017	18	18	23.5

Platform length expands up to 28". Work clamps, vice, handle, and load-securing back bar included.

BENT FORK



P/N	W"	L"	WT.(LBS.)
536044	21	18	12.5

3.5" height from floor. *Available with 14" chassis only. Not available with Lite model.*

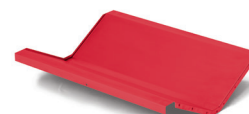
STRAIGHT FORKS



P/N	W"	L"	WT.(LBS.)
536053	18.5	18.5	11.0
536048	20	32	16.0
536060	21	18	11.5

5" height from floor.

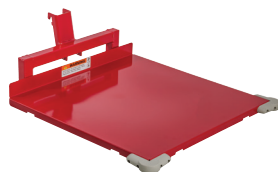
V-TRAY



P/N	W"	L"	WT.(LBS.)
536054	19	24.5	10.0

Accommodates cylindrical products 4" to 24" (requires 536053 fork attachment).

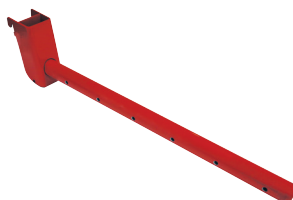
ONE-PIECE PLATFORM



P/N	D"	L"	WT.(LBS.)
536130	26	26	26

One piece design includes corner bumpers and cargo strap attachment points (strap not included). *Available with Lite model only.*

ARBOR



P/N	D"	L"	WT.(LBS.)
536039	1.5	24	7.5

Accommodates rolled material.

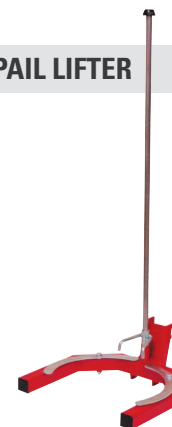
BOOM AND CHAIN



P/N	D"	L"	WT.(LBS.)
536088	1.875	24	5.5

Adjustable boom plus chain/hook assembly (requires 536039 arbor attachment). *Not available with Lite model.*

PAIL LIFTER



P/N	D"	L"	WT.(LBS.)
536093	14	16	11.0

Accommodates three 5-gallon pails. Hook height adjustable 3" to 34" high from top of forks. *Not available with Lite model.*

STEEL PLATFORMS



P/N	W"	L"	WT.(LBS.)
536025	24	24	15.5

Requires 536044 or 536060 fork attachment.



P/N	W"	L"	WT.(LBS.)
536033	34	34	30.0

Requires 536048 fork attachment.



P/N	W"	L"	WT.(LBS.)
536103	21.5	19	30.0

Requires 536060 fork attachment. 18" W x 17.75" L usable surface in center. *Available with 25" chassis only.*

Have a special application?

Call us today to discuss a custom attachment.

Options and Accessories

ERGO HANDLE



P/N	WT.(LBS.)
532128	5.25

Three-position handle provides additional grip points for increased comfort and maneuverability. *Not available with Lite model.*

TOTE BAG



P/N
534500

Use the tote bag to store the remote and work bench accessories securely on the unit.

BATTERY CHARGER



P/N
63027

External battery charger allows you to charge an extra battery while the lift truck is in use to reduce downtime.

REMOTE



P/N
534200

Tethered remote allows user to actuate lifting and lowering up to 6' away.

TOTAL-LOCK CASTER



P/N	H"	WT.(LBS.)
130035	3.5	1.6

Casters can swivel and lock independently, in any direction. *Option available on Lite model only.*

ONE SYSTEM. MANY TOOLS.





howi.com

📍 House Of Wheels Inc
7701 W Mossy Cup St | Boise, ID 83709 | USA
📞 (800) 574.1257
📞 (208) 342.3254
📞 (208) 342.1531
✉ info@howi.com